



 **Lorin**
*Infinite possibilities
in aluminum finishing solutions®*

Architectural Solutions



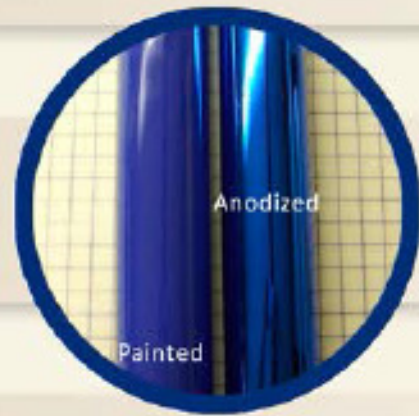
Consistency

Looking for panel-to-panel match quality?



Sustainable Design

Did you know that aluminum is indefinitely recyclable?



Permanent Metallic Finish

Anodizing illuminates - paint covers!

Exposure to Weather

No more rusting! No more flaking or peeling!

Ultraviolet Exposure

Does resistance to fading appeal to you?



Durability

Did you know that the anodized layer is sapphire hard?

Lorin's aluminum coil anodizing process ensures consistent color from the start of the aluminum coil to the final wrap, not like the batch anodizing process.

Aluminum is the most abundant element in the earth's crust and is 100% recyclable. Anodized aluminum and Lorin's anodizing process does not contain any volatile organic compounds.



The translucent oxide layer accentuates the rich metallic appearance of the aluminum and does not cover it up like paint. Lorin's anodized aluminum will not chip, flake, or peel.

Lorin's coil anodized aluminum will not patina like copper and zinc, rust like steel, or weather like brass. The aluminum oxide layer is resilient and will hold up to extremely harsh environments.



Lorin's ColorIn® series was developed to provide the design landscape with UV stable colors from a soft champagne gold to elegant bronze-tones, and then compliment the series with a rich black finish.

The aluminum oxide layer is three times harder than the aluminum itself and provides a natural abrasion resistance.



Excellent Panel Matching Quality



Mercedes-Benz Superdome

"This state-owned building is an important symbol of the state of Louisiana, the city of New Orleans and its resurrection after hurricane Katrina, and it was imperative that it be rebuilt to its original design aesthetic, but meets all of the stringent finish and performance standards of modern day exterior building systems. We found that only Lorin Industries could meet the finish requirements we and our client were looking for".

Brad McWhirter, AIA, Lead Project Manager, Trahan Architects



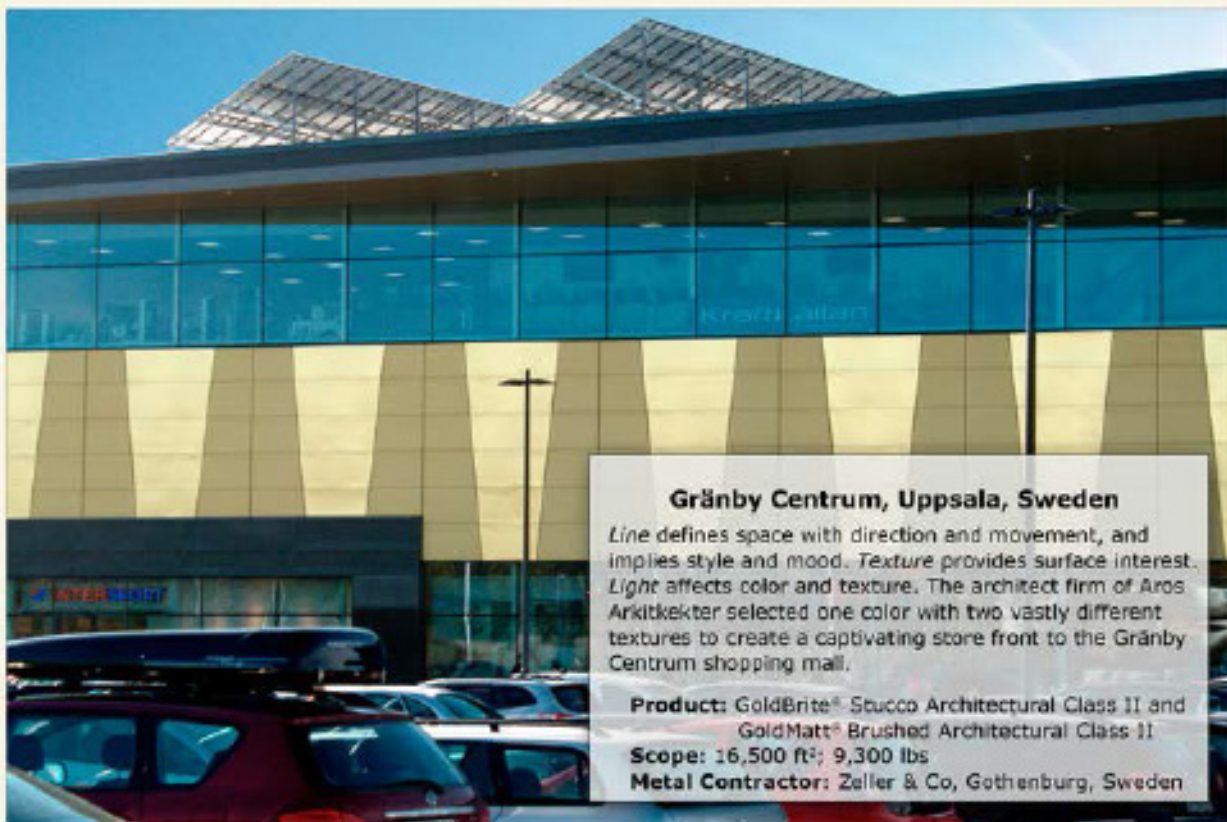
Product: Light Bronze ColorIn® Stucco Embossed with an Architectural Class 1 Anodize
Architect: Brad McWhirter, Trahan Associates
Scope: 400,000 ft²; 355,000 lbs
Metal Contractor: Ryerson
Cladding: Kalzip FC Facade System Panels
General Contractor: Gibbs Construction
Location: New Orleans, LA USA

Product: ClearMatt® with an Architectural Class II Anodize
Architect: Gyeongbuk Architect
Scope: 68,000 ft²; 38,400 lbs
Metal Contractor: Garmco Myunghwa Ltd.
Cladding: Honeycomb Panel System
Location: Gyeongju City, South Korea

Gyeongju World Expo Tower

This remarkable 17-story structure was built with a cut-out in the center of the building resembling the legendary 9-story Hwanryongsa Temple's Wooden Pagoda that was the largest pagoda in South Korea. The principal architect, building owners, and city officials wanted a showpiece structure in the center of the Gyeongju Cultural Expo Park. They wanted a reflective, consistent panel-to-panel match quality that only Lorin's coil anodized aluminum process would provide to illuminate the structure and show off their ancestral heritage.





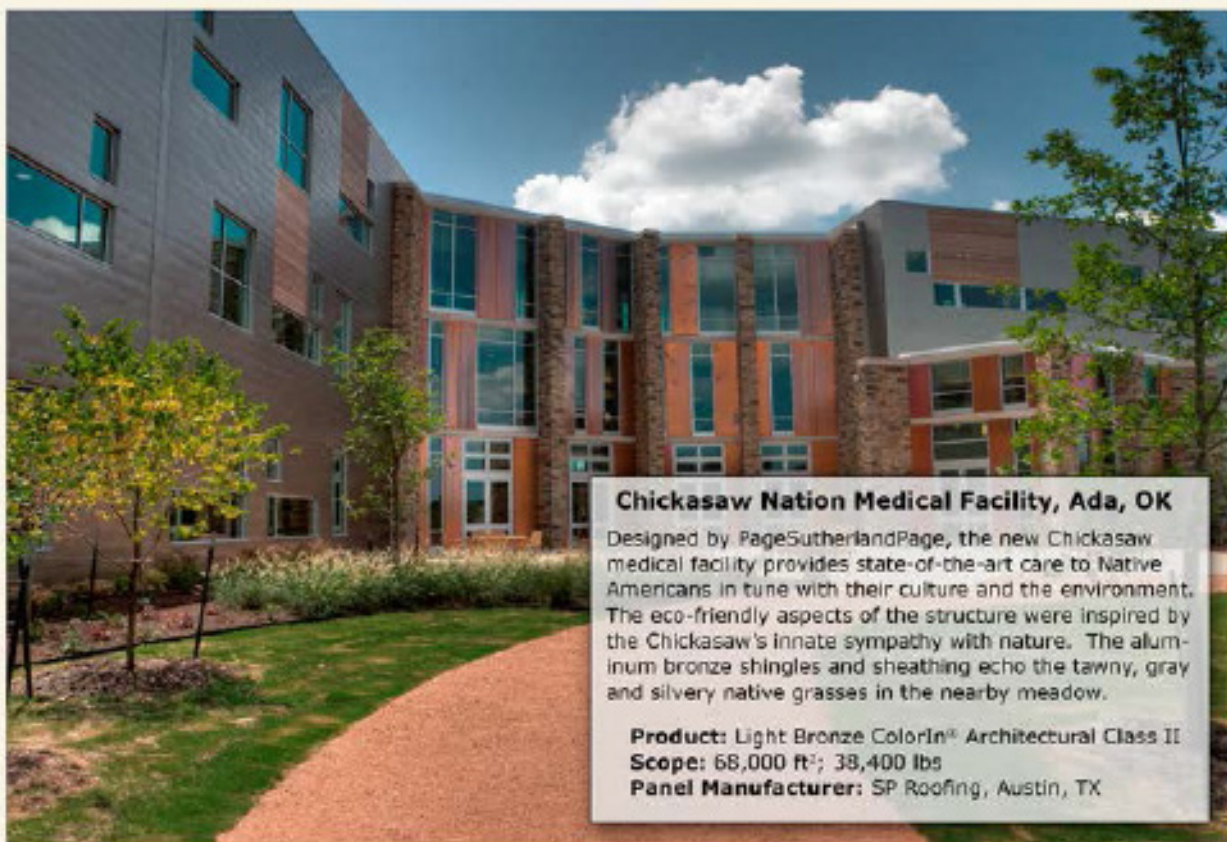
Gränby Centrum, Uppsala, Sweden

Line defines space with direction and movement, and implies style and mood. *Texture* provides surface interest. *Light* affects color and texture. The architect firm of Aros Arkitekter selected one color with two vastly different textures to create a captivating store front to the Gränby Centrum shopping mall.

Product: GoldBrite® Stucco Architectural Class II and GoldMatt® Brushed Architectural Class II

Scope: 16,500 ft²; 9,300 lbs

Metal Contractor: Zeller & Co, Gothenburg, Sweden



Chickasaw Nation Medical Facility, Ada, OK

Designed by PageSutherlandPage, the new Chickasaw medical facility provides state-of-the-art care to Native Americans in tune with their culture and the environment. The eco-friendly aspects of the structure were inspired by the Chickasaw's innate sympathy with nature. The aluminum bronze shingles and sheathing echo the tawny, gray and silvery native grasses in the nearby meadow.

Product: Light Bronze ColorIn® Architectural Class II

Scope: 68,000 ft²; 38,400 lbs

Panel Manufacturer: SP Roofing, Austin, TX

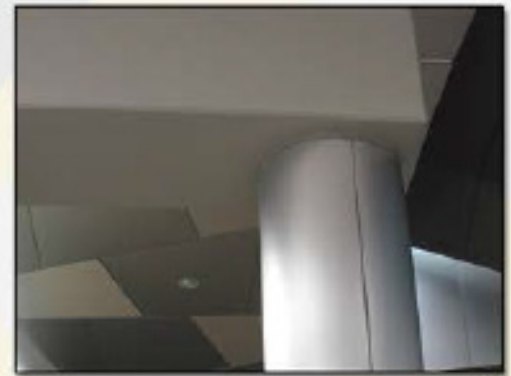
Elegant Interior Designs



Backsplash AlumaPlus®

This kitchen boasts an anodized aluminum backsplash that compliments the granite countertop, refrigerator, and blond cabinetry.

Anodized aluminum makes an equally striking impression with other metals like stainless steel.



Ceiling/Column Cover ClearMatt®

Gold is the unparalleled symbol of money and luxury. Anodized aluminum comes with a much lower price tag.



Store Fronts GoldBrite®

As you walk down this corridor, you're going to encounter a delicate balance of soft metallic beauty and impervious geometric shapes.



Composite Panels ClearMatt®



Shelving GoldMatt®Brush



Lighting DuraMat®3000



Retail Display GoldBrite®



Signage AlumaPlus®Brush



∞ Lorin

*Infinite possibilities
in aluminum finishing solutions®*

1960 Roberts Street
Muskegon, MI 49442-6035 USA
800.654.1159 toll-free
231.722.1631 phone
www.lorin.com